



# AMALTAS STRATEGIC OPPORTUNITIES SERIES I

Information Memorandum

July 2025

# ◎ Founder - Chaitanya Shah

- Graduated from BITS Pilani in 2014
- Former Investment Banker at JP Morgan in their Mumbai and New York offices
- Worked across multiple transactions in the North American Real Estate market
- Lead analyst across Mergers and Acquisitions, Buyouts and IPOs and other capital raise transactions with values aggregating to more than \$1bn
- Established Amaltas Asset Management in 2024 focusing on the Indian equity markets
- CFA (USA) charterholder







# Portfolio Offering\*

Actively Managed Strategy

---

\*Amaltas Capital is a SEBI registered PMS (INP000009126); Please read the disclosure document for additional information.

Strictly confidential (for private circulation only, not for public distribution)

[www.amaltascapital.in](http://www.amaltascapital.in)





# Public Equity Investments. ☉

## Private Equity Structure.

---

A public-market strategy that applies the structural rigor of private capital, lifecycle discipline, exit-aligned incentives, and intentional participation.



### FOCUSED BY DESIGN

We concentrate capital in only 3-7 high conviction positions – each deeply researched and rooted in asymmetry.



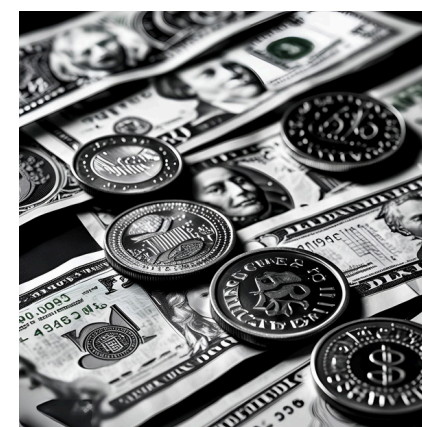
### TIME-BOUND. NOT PERPETUAL

Each position is entered with a defined thesis and a target exit window (typically 2-3 years). No open-ended holdings, no drifting.



### SELECTIVE PARTICIPATION

This strategy is available only to investors suited to its profile: comfortable with concentration, volatility, and a multi-year cycle.



### REDEMPTION-LINKED FEES\*

We charge performance fees only when capital is returned, hence mirroring private equity's realized-outcome model. No NAV-based leakage.

\*Custody fees, fund accounting fees and other operational charges may be levied from time to time; subject to a maximum of 50bps as per SEBI Regulations. Performance fees will be levied on partial redemption / capital return; Plus GST and statutory levies applicable

Strictly confidential (for private circulation only, not for public distribution)

# Investor Eligibility Criteria

## Concentrated Equity (High Risk/High Reward)

This strategy targets outsized returns through a highly concentrated portfolio.



### SEASONED MARKET EXPERIENCE

10+ years of active equity-markets.  
Judgement built through cycles.



### CAPITAL COMMITMENT\*

Minimum INR 4cr. Allows  
meaningful exposure.



### HIGH RISK APPETITE

Comfortable with volatility and  
concentration.



### LONG-TERM COMMITMENT

2-3 years investment horizon.  
No tactical short term churn.

### Fee Structure

**Fixed Management fee:**  
1% Management Fee

**Performance fee\*\*:**  
20% of realized profits, 10%  
annual hurdle. No NAV based fee,  
no leakages. Earned only on  
actual capital returned.

\*\*Performance fees will be levied on partial redemption / capital return; Plus GST and statutory levies applicable

\*Minimum contribution of 4cr across all PMS schemes of Amaltas Asset Management LLP..

Note: Portfolio manager may waive criteria at discretion

Strictly confidential (for private circulation only, not for public distribution)

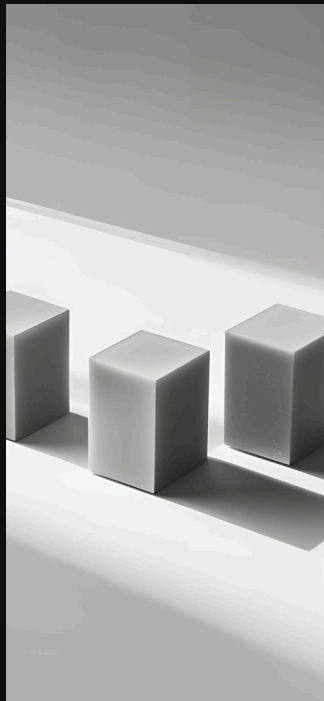




# © Portfolio Strategy

# Exploiting Cyclical And Structural Dislocations

Objective : To exploit **dislocated opportunities** by identifying a small set of **high conviction equity bets (3-7 stocks)** that presents **extreme asymmetry** between price and intrinsic value — often overlooked and misunderstood by broader markets.



## CYCLE REST OPPORTUNITIES

Companies or sectors emerging from prolonged neglect downturn positioned at inflection points



## UNDISCLOSED/UNDER-OWNED

Limited institutional participation; high potential for re-rating



## FINANCIAL CREDIBILITY

10+ years of clean, predictable performance through multiple cycles

## DOWNTURN SURVIVORS

Operationally efficient businesses that gained resilience in adversity

## EARNINGS TORQUE AHEAD

Margins and ROEs at cyclical lows with >30% earnings CAGR visibility over 2-3 years

## VALUATION GAP

Trading significantly below historical averages — providing meaningful margin of safety

### Cyclical Dislocations

Temporary mispricing driven by macro or industry cycles, investor sentiment, or liquidity shocks

### Business Cycle Troughs

Sharp pessimism following prolonged underperformance or distress

### Regulatory or Policy Overhangs

Valuation suppressed by temporary uncertainty (e.g. rate hikes, bans, taxes)

### Peak Fear/Capitulation

Forced selling, redemptions, and bankruptcies leading price collapses

### Neglected Sectors

Sectors out of favour due to strong underperformance despite clean fundamentals

# Why Dislocations Emerge? ◎

### Structural Dislocations

Enduring inefficiencies arising from business or capital structure transitions

### Mergers & Acquisitions (M&A)

Value often gets obscured or mispriced during deal execution

### De-Mergers & Spin-offs

Newly independent units often under-owned and under-analysed leading to possible re-rating

### Holding Company Discounts

Conglomerates trading below sum-of-parts value due to complexity and opacity

### Management & Ownership Change

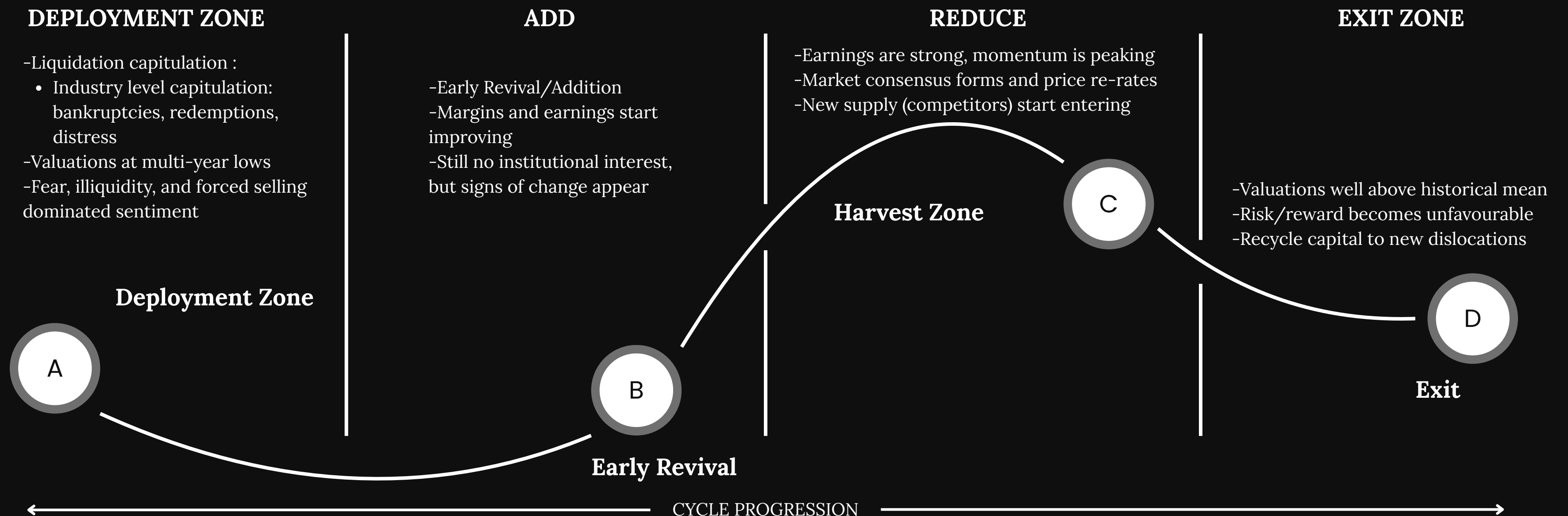
New leadership unlocking value in legacy business





# Opportunity Lifecycle & Action Framework

We act only when mispricing meets visibility with entry and exit decisions grounded in a disciplined, cyclical framework aimed at capturing asymmetry



# Competitive Edge



## Data-Led Market Intelligence

We integrate macro, multi-asset, and inter-market signals to stay ahead of capital flows and business cycles

- Proprietary data models across equities, bonds, currencies, and commodities
- High-frequency signal capture to detect inflection points early
- Multi-asset correlations guide tactical entry/exit and portfolio conviction.

## High-Conviction Risk Management

Risk is not volatility — it is permanent capital loss. We protect capital through disciplined research and asymmetric setups

- Deep forensic analysis of company governance, and ownership history
- Strict downside-focused entry thresholds (valuation, balance sheet, promoter quality)
- No “style drift” — portfolios remain concentrated and intentional

## Experience with Complexity & Cycles

Investing through cycles demands more than models — it requires pattern recognition honed by experience

- Team track record of navigating crisis, booms, and reform cycles
- First hand understanding of business model resilience and tail risks
- Network-led insights into industry shifts and supply chain dynamics





# Disclaimer

---

*This presentation is a general overview of Amaltas Asset Management LLP's proprietary investment strategy. This overview is being furnished on a confidential basis solely to a limited number of sophisticated prospective investors considering the investment under the PMS model. Amaltas Asset Management LLP is a registered PMS with SEBI (INP000009126). Any reproduction or distribution of this overview, in whole or in part, or the disclosure of its contents, without the prior written consent of the Manager, is prohibited.*

*This document is being provided to you solely for your convenience. However, it is not intended to be, nor shall it be construed as, an offer, or a solicitation of an offer, to buy or sell equities. Nothing in this document constitutes accounting, legal, regulatory, tax or other advice. Any decision to subscribe must be made solely on the basis of information contained in the respective Investor Agreement, which information may be different from the information contained in this document. The information contained in this document, including any data, projections and underlying assumptions are based upon certain assumptions, management forecasts and analysis of information available as at the date of this document and reflects prevailing conditions and our views as of the date of the document, all of which are accordingly subject to change at any time without notice and Amaltas Asset Management LLP is under no obligation to notify you of any of these changes. In preparing this document, we have relied upon and assumed, without independent verification, the accuracy and completeness of all information available from public sources or which was otherwise reviewed by us. While the information provided herein is believed to be reliable, Amaltas Asset Management LLP makes no representation or warranty whether express or implied and accept no responsibility for its completeness or accuracy or reliability. The performance related data has not been verified by SEBI.*

*The information contained herein relating to the performance of portfolios is for historical information only. You should note that past performances are not indicative of future performance.*

---

# Contact Us ☉

For more information, please reach out to us at

Email: [support@amaltascapital.in](mailto:support@amaltascapital.in)

Phone: +91-22-31026713

Website: [www.amaltascapital.in](http://www.amaltascapital.in)

Amaltas Asset Management LLP,  
303, BGTA Ganga CHS, Wadala,  
Antop Hill,  
Mumbai - 400037

